

Clouds 2 Report

Preston Marcoux

Flow Vis



Introduction

My second cloud assignment was a spontaneous adventure. On November 5 after hours of Senior Design struggles and frustrations, I looked at my roommates and said lets go to Morrison. So, we packed up our stuff, grabbed our cameras, and set out to Morrison. In Morrison, we found a small hike inside Willow Springs and began up the hogback with intentions of getting some cool pictures of clouds. Honestly it wasn't the best day to be cloud hunting, however there were several cloud formations that did catch my eyes. In the southern portion of the skyline was a set up altostratus or altocumulus clouds that stretched for a number of miles.

Location

At approximately 5:00 PM the image on the cover page was taken. The image was captured in Morrison CO, on the hogback. According to Wikipedia:

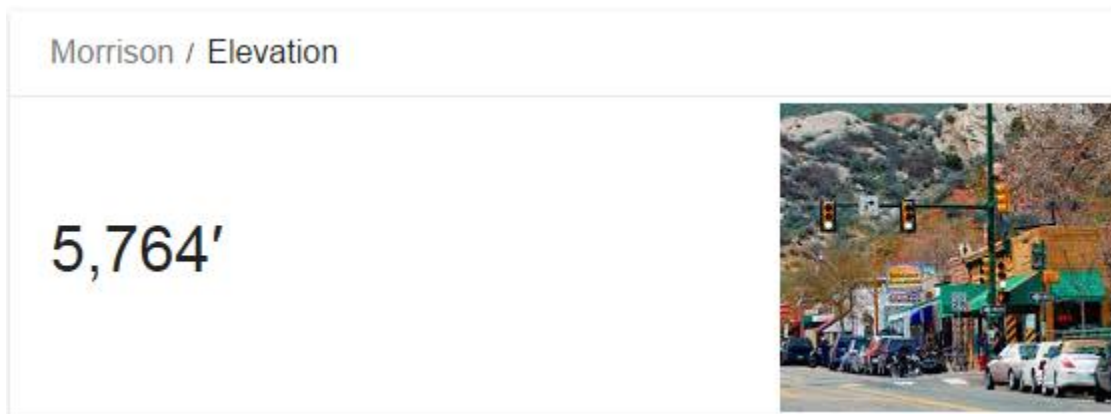


Figure 1: Elevation of Morrison Colorado taken from Wikipedia.

Adding a couple hundred feet because of the hike, I can estimate that I was at an elevation of about 6000 feet to take this image. According to Figure 2 the coordinates of my location were 39.604,-105.15.

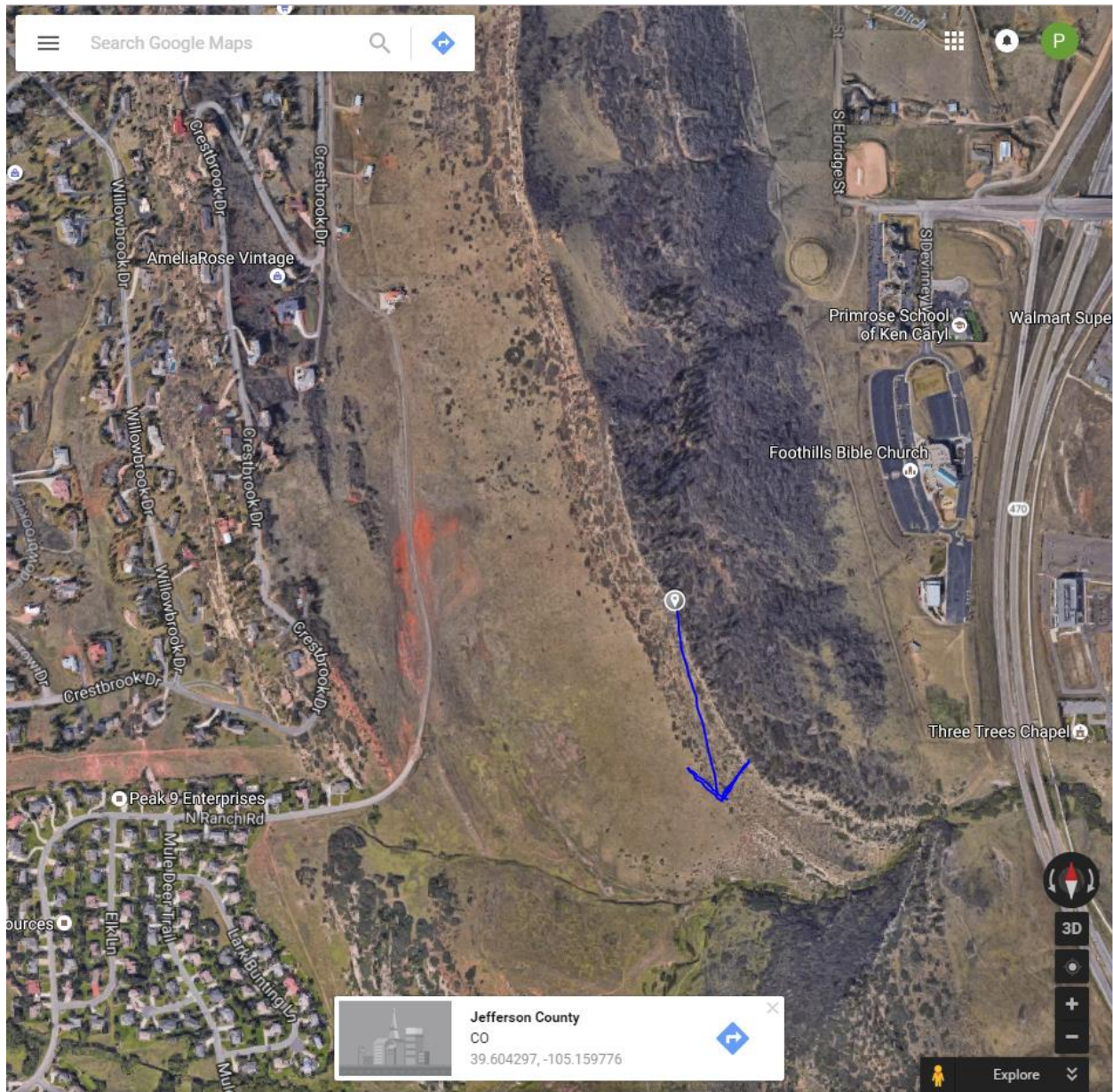


Figure 2: Diagram to Show Location of Photoshoot.

The above image also shows that I was facing the south eastern direction to capture the image. I angled the camera parallel to the ground at 0 degrees so it seemed like I was dancing with the clouds. After examining the image taken the clouds are a few hundred feet higher than my elevation. Which leads me to believe that the clouds are around 10,000'. The rest of the sky was very peaceful, as the image was taken in a stable environment with a cape of 0. There was little to no wind.

72469 DNR Denver

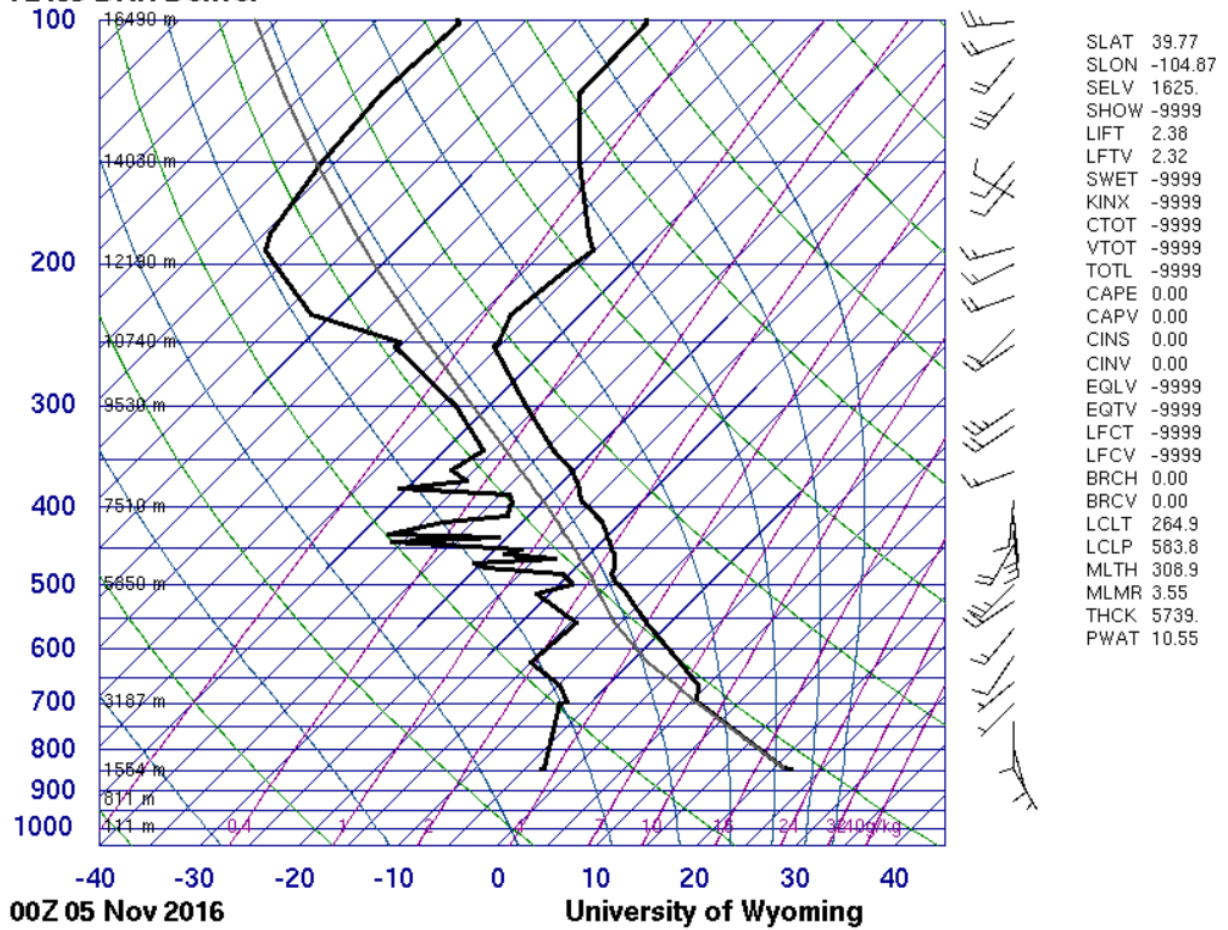


Figure 3: Skew T of Denver At 6:00 PM

The skew T above shows the conditions on November 5 around the time that I was hiking. From what the diagram depicts, at around 9500 meters there was a good chance of cloud formations.

Photographic Technique

The field size of view is a linear field of view of about 2 x 10 miles. The clouds are around one mile from my elevation and around 10-20 miles longitudinally from my location. This results in the center of the clouds being about 15.03 miles from my camera. All the camera specs, type of camera, and exposure specs can be found in figures 4 and 5.

Image	
Image ID	
Dimensions	5184 x 3456
Width	5184 pixels
Height	3456 pixels
Horizontal resolution	72 dpi
Vertical resolution	72 dpi
Bit depth	24
Compression	
Resolution unit	2
Color representation	sRGB
Compressed bits/pixel	

Figure 4: Image Specifications

Camera	
Camera maker	Canon
Camera model	Canon EOS REBEL T5
F-stop	f/8
Exposure time	1/250 sec.
ISO speed	ISO-100
Exposure bias	0 step
Focal length	75 mm
Max aperture	4.125
Metering mode	Pattern
Subject distance	
Flash mode	No flash, compulsory
Flash energy	
35mm focal length	

Figure 5: Camera Specifications

Post Processing

I think the post processing techniques make the image. I darkened the image a bit by changing the curves in Photoshop and cropped the image to block out some of the surroundings. I also made sure that all of the buildings on the hills were taken out of the picture. My favorite thing about this image is by darkening the image it helps in two ways. It brings out some of the features of the clouds, it gives them a blueish tint, and I really like the shadows on the hills. The red on the hills adds in a nice flare and gives the image personality. The curves can be seen in figure 6. In post processing I also took out some of the clouds so that the image looks framed in a better manner. The before and after editing shots can be seen on the following page.

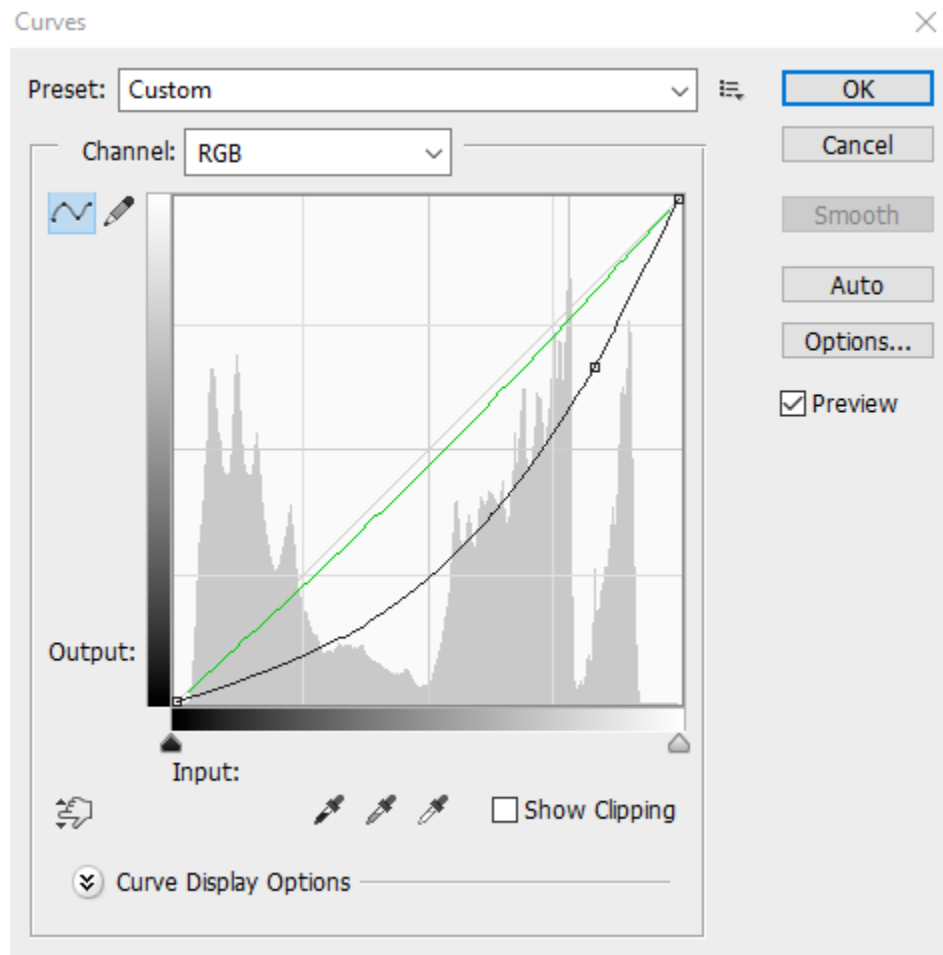


Figure 6: Custom Curves in Photoshop



Closing Thoughts:

I am happy with the way the image came out, it tells a unique story and conveys the way I was feeling as the photographer. The shades of red show the frustration of senior design, and the shadows create a mysterious shade in the image. The blue and orange tints within the clouds show beauty and that there are better things on the horizon. I think the image does a fantastic job of conveying all of this. My favorite part of the image is the red shades on the hills and the shadows created in the mountains and the clouds. Something I am not entirely happy with is that I was unable to fit the full cloud in the image. I think this image fulfills my intent of telling a story, and it definitely portrays the emotions felt during the photo session. I would have liked to have been in a more controlled environment where I could have framed the shot a little better. This could have been done using a tripod for stability.

Works Cited:

https://en.wikipedia.org/wiki/Morrison,_Colorado

<https://www.google.com/maps/@39.6039018,-105.161765,1859m/data=!3m1!1e3>